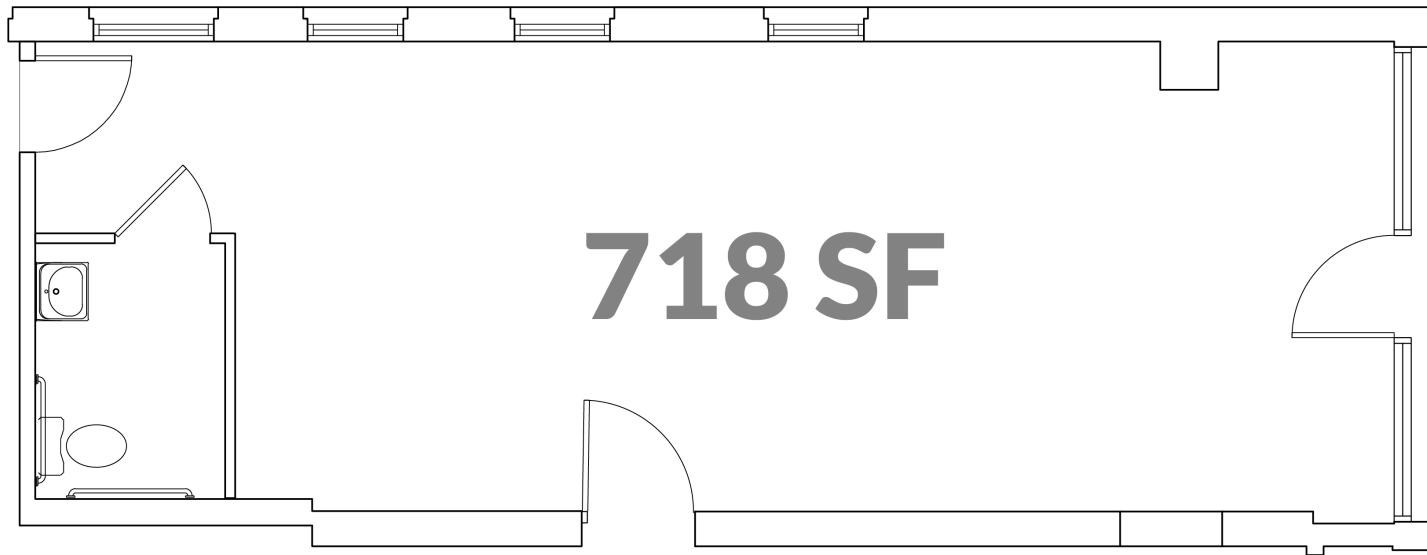


This 718-square-foot street-level space at 28 W 15th Street is nestled in the heart of Over-the-Rhine. It's perfectly positioned to take advantage of the lively atmosphere on Vine Street and Race Street. Enjoy easy access to an array of bars, restaurants, and shops, making it convenient for all! This space is best suited to accommodate a small office or service business.





This brochure is for illustration purposes only and not part of a legal, binding contract. Information is subject to change without notice.

Please consult with a 3CDC representative for complete and up-to-date information 07/2024.